

Solicitation No. CENTRAL GRANDE RONDE_DSPACE 2024
Fully Insured Forestry Contractors to Complete
Private Landowner D-Space Projects & Roadside Fuel Breaks
in Union County by May 15, 2025
Posted: 3/8/24 Due: 3/22/24

Wallowa Resources working alongside Oregon Department of Forestry-La Grande is seeking fully insured forestry contractors able to complete defensible space (D-Space) for identified private nonindustrial landowners and strategic roadside fuel break projects within the Central Grande Ronde Fuels Project [area](#) (Elgin, Spout Springs, Rysdam Duncan Canyon) in Union County by May 15, 2025. The entire project will cover D-Space homesite projects and/or strategic fuel breaks across roughly 200 acres within the project area.

QUALIFICATION REQUIREMENTS: Wallowa Resources will require the contractor to have the following:

- Certificate of insurance (minimum of \$1,000,000) with Wallowa Resources listed as a certificate holder on the insurance policy
- W-9 Form
- Ability to complete the d-space and/or strategic fuel break projects over the next approx. 16 months (by May 15, 2025)
- Experience performing d-space and forestry treatments in Northeast Oregon forests
- Ability to work in collaboration with diverse partners and people including the Oregon Department of Forestry Stewardship Foresters, Wallowa Resources, landowners, Firewise Community residents, and the Umatilla National Forest
- Sub-contracting is allowed upon approval by ODF and Wallowa Resources, and Subcontractor meets the above criteria for the project

PROJECT SPECIFICATIONS:

Defensible Space (Dspace) Project (approx. 1 acre around homesites) may include:

Turnouts for two-way travel clear of vegetation	Driveway - Adequate fuel break
Driveway accessible to fire equipment (12' horizontal & 13.5' vertical distance)	Adequate turn around area at house
Cut back tree limbs that overhang roof or touch siding (less than 8" DBH)	Limb Trees (no more than 1/3 of the tree height)
Remove dead vegetation and reduce excess accumulation of native hardwood brush	Additional Circumstances ie: steep slopes, tree density 8' spacing or less average, etc.
Space trees (18'-24' apart) 10" max dbh	Remove ladder fuels



Strategic Fuels Breaks (fuel reduction beyond the approx. 1 acre homesite, roadside fuel breaks, etc.):

- **Spacing**
 - All trees removed within 10' of the road driving surface.
 - pre-commercial thinning and slash disposal specifications will average around a 18' - 24' spacing (Spacing may be adjusted on a case by case basis depending on overstory stocking levels and site conditions).
- **Tree selection**
 - Selecting the most vigorous trees of the desired species in which the site is suited for.
 - Leave trees should be of fire resilient species when present.
 - Avoid leaving the same species when mistletoe is present in the overstory stand.
- **Slash**
 - Pine slash generation is only acceptable between September and December months.
 - Working in pine dominated stands during other months must be ground, chipped or burned within 1 calendar month unless incorporated into large commercial slash piles.
 - Hand/machine piling and burning is accepted when outside the Defensible space work area.

BID INSTRUCTIONS:

- The Central Grande Ronde Landscape Resiliency Project is a collaboration between local partners including Oregon Department of Forestry (ODF) - La Grande office, Oregon State University (OSU) Extension Forestry/Fire, Wallowa Resources, Union County Soil and Water Conservation District, Umatilla National Forest, and others.
- The goal of the project is to implement strategic fuel reduction treatments by connecting vital corridors on private lands adjacent to public land. As a contractor you will be representing this partnership and each of the entities involved. You will also be responsible for building long term relationships with landowners within the community. Within your bid submission please outline your experience with and ability to work with landowners and maintain relationships with natural resource partners.
- Your bid could include just dspace home sites (which include the approx. 1 acre surrounding the house) and/or fuels reduction beyond the defensible space project site.
- Please provide your average rate per acre and/or per dspace project.
- We are looking for contractors who can do a minimum of five D-Space projects.
- This is a competitive bid process.
- Interested contractors with the above specifications should return the below bid submission page to Wallowa Resources by Friday, March 22, EOB. Please email submissions to info@wallowaresources.org



**Solicitation No. CENTRAL GRANDE RONDE _DSPACE 2024
Bid Submission**

Instructions: Submit to info@wallowaresources.org by **Friday, March 22, EOB**

Contractor Name:

Business Address:

Contact Information (Phone & Email):

Equipment:

Qualifications to complete this work:

Experience working with private forest landowners and natural resource partners:

Proposed start and finish date: _____ (start) _____ (finish)
(Must be completed by May 15, 2025)

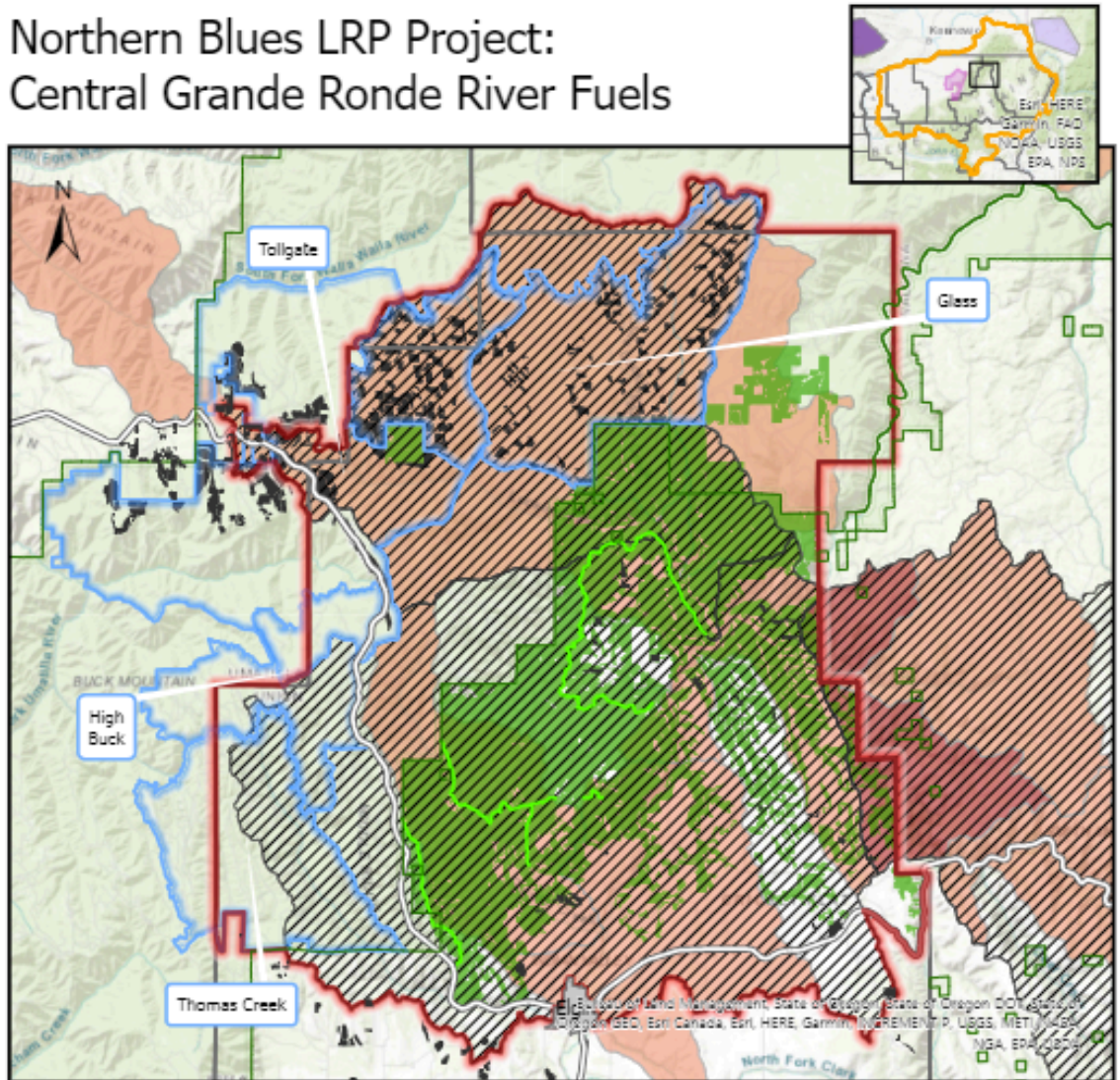
BID PROPOSAL

	Approx # you propose you can complete by May 15, 2025	Bid	
D Space homesites (approx 1 acre around the home)	# of home sites		\$ / d space home site
Acres of Strategic Fuel Breaks (beyond the 1 acre home site, roadside fuel breaks, etc)	acres		\$ / acre



MAP OF CENTRAL GRANDE RONDE RIVER PROJECT AREA

Northern Blues LRP Project: Central Grande Ronde River Fuels



Scale: 1:320,000

0 2.5 5 10 Miles

